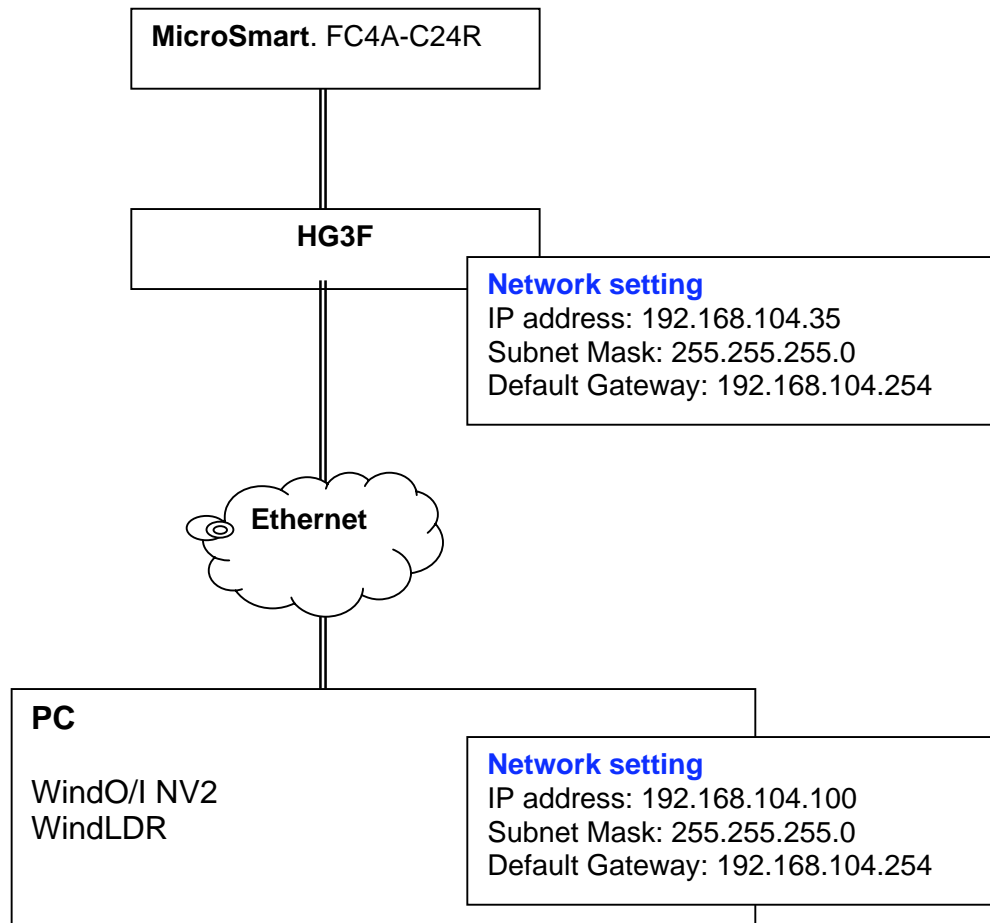


Application Note:

Ethernet Pass Through Configuration

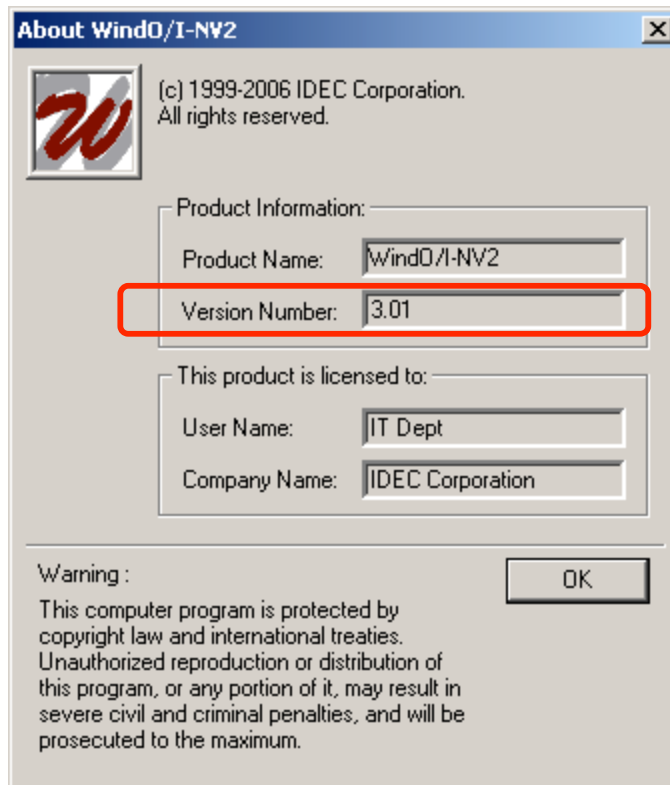
System Setup

Before setting up your HG3/4Fs and PLCs, you need to decide which IP addresses you will assign to the HG3/4Fs. This document shows how to set up the system configuration shown here:



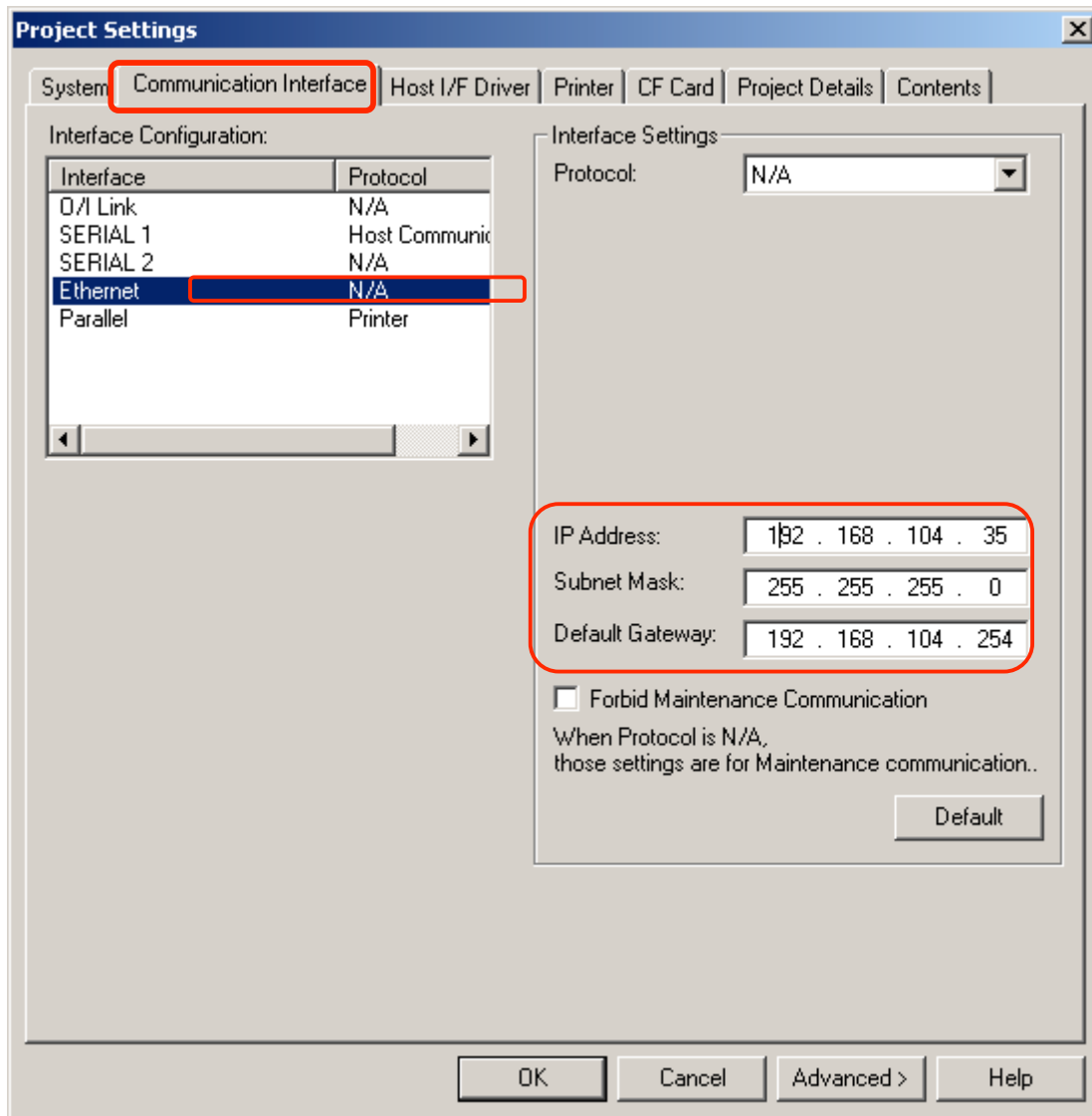
How to set up WindO/I NV2

- (1) Confirm that you are using the latest version of WindO/I NV2. Open the **About WindO/I NV2** dialog box by selecting **About** from the Help menu. If the Version Number is **3.01 or later**, you can use the Ethernet pass through function.

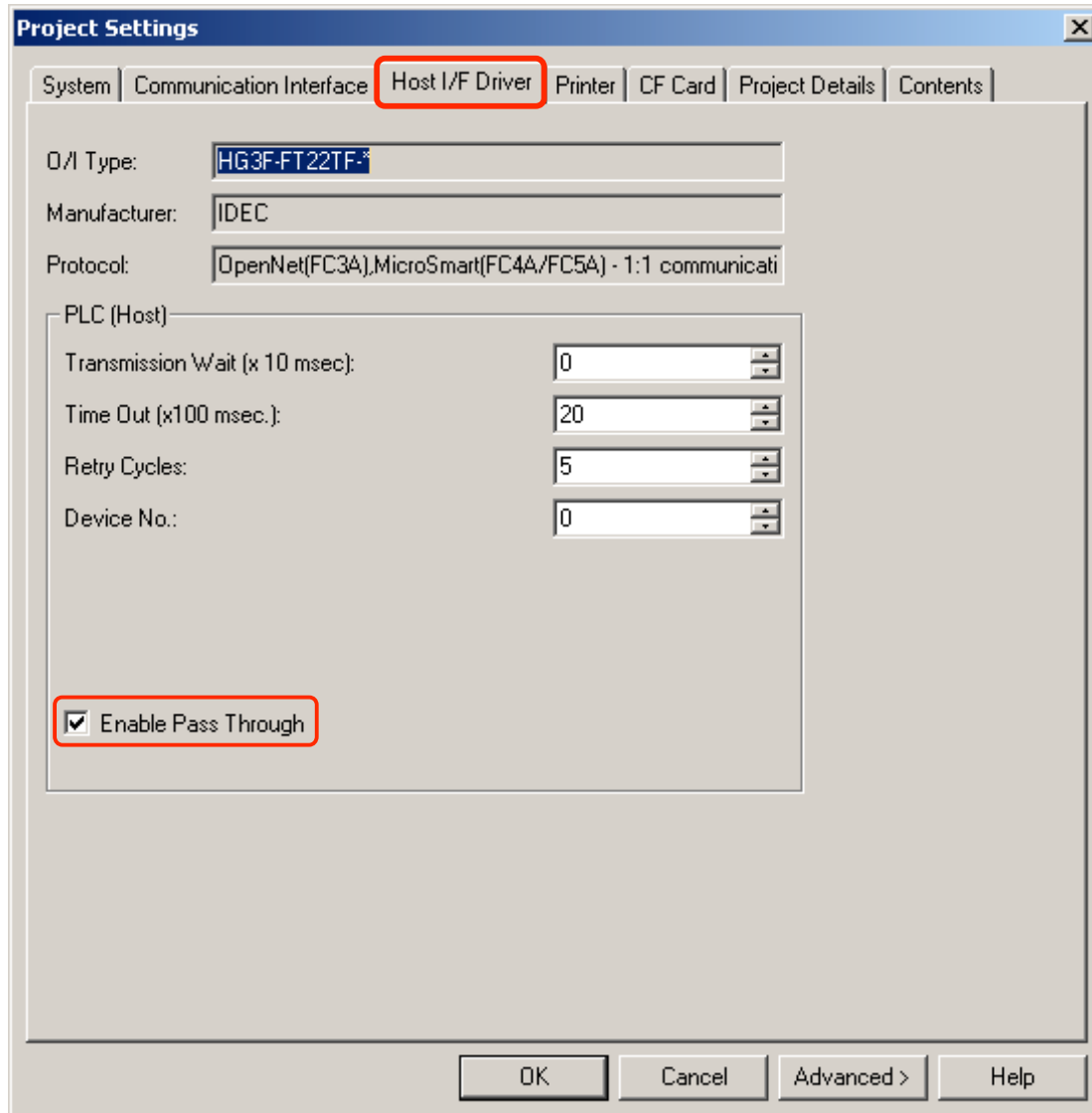


- (2) Open the **Project Settings** dialog box and make sure all settings are properly configured.

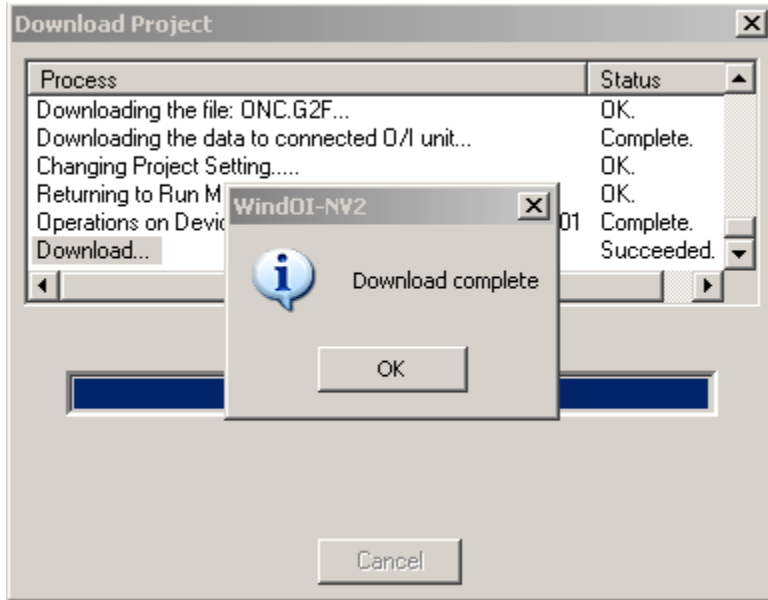
Select the Communication Interface tab and left-click on Ethernet (as shown). You will see the network settings of the HG interface. Verify that the network setting for the HG is correct.



Select the **Host I/F Driver** tab in the same dialog box and verify that the **Enable Pass Through** option (shown) is checked.



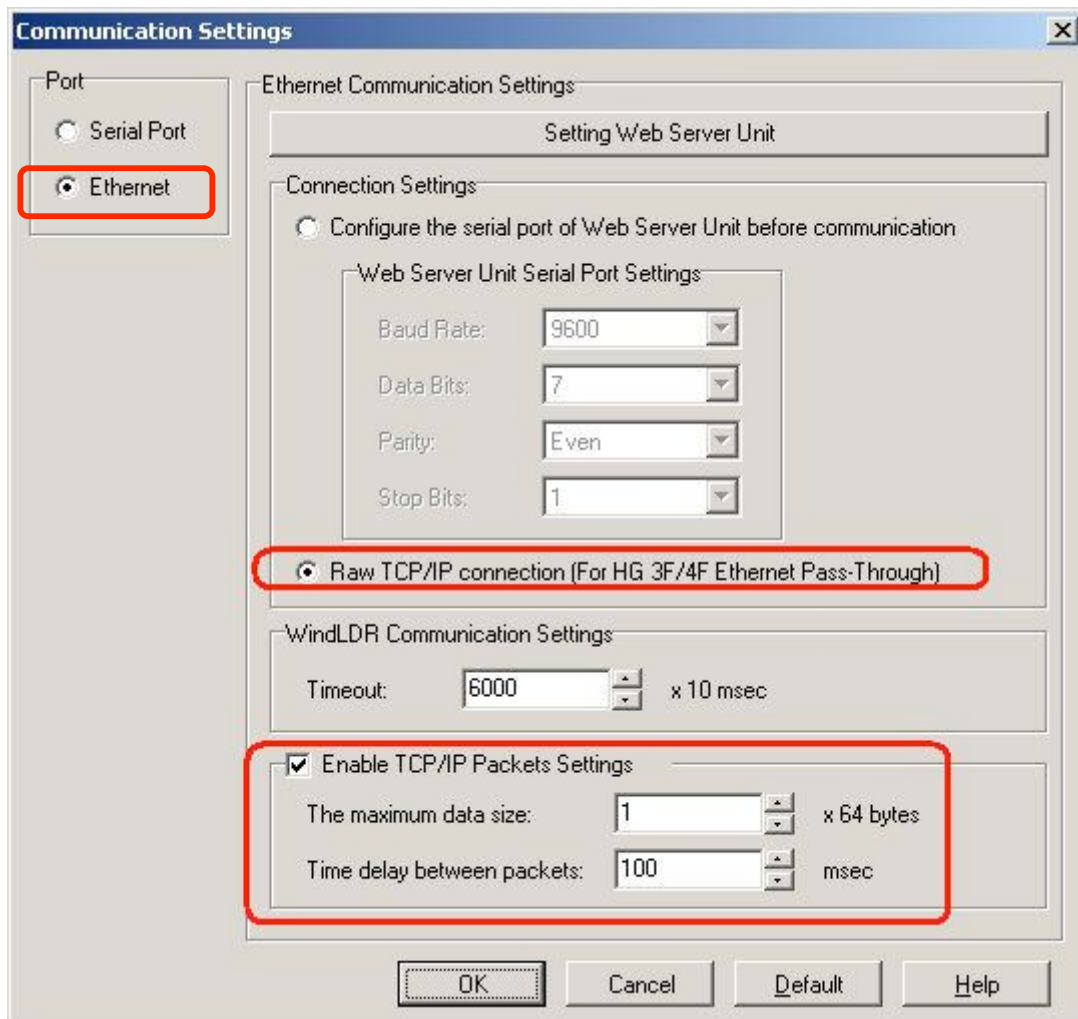
Download the project to the HG3F.



How to setup WindLDR

- (1) Open the **Communication Settings** dialog box by selecting **Communication Settings...** from the **Configure** menu. Select Ethernet on the left (as shown) and then select the button for Raw TCP/IP connection (For HG3F/4F Ethernet Pass-through).

Check the box to Enable TCP/IP packets settings. Set 1 for The maximum data size and 100 for Time delay between packets. Click OK to close the dialog box.



Now you can monitor, upload and download the program to your HG3F/4F touchscreen.

- (2) When you initialize monitoring, uploading or downloading a program, WindLDR will ask for the IP address. Select the IP address that you have assigned to the HG and click the OK button.

